

Rated Lifting Capacities

Table A	Table C	Table D
TM-ZE293HRB	TM-ZE293HRB	TM-ZE293HRB
● 2.85 m / 4.74 m Boom	● 2.85 m / 4.74 m Boom	● 2.85 m / 4.74 m Boom
LOAD RADIUS (m) 1.6 <sup>RD</sup> below 2.0 2.5 3.0 3.5 4.0 4.54	LOAD RADIUS (m) 1.6 <sup>RD</sup> below 2.0 2.5 3.0 3.5 4.0 4.54	LOAD RADIUS (m) 1.6 <sup>RD</sup> below 2.0 2.5 3.0 3.5 4.0 4.54
CRANE STRENGTH 3,030 2,330 1,880 1,500 1,250 1,080 980	CRANE STRENGTH 3,030 2,330 1,880 1,500 1,250 1,080 980	CRANE STRENGTH 3,030 2,330 1,880 1,500 1,250 1,080 980
EMPTY CHASSIS Extension width of outriggers MAX 3,030 2,330 1,730 1,230 930 730 680	EMPTY CHASSIS Extension width of outriggers MAX 3,030 2,330 1,880 1,480 1,100 850 730	EMPTY CHASSIS Extension width of outriggers MAX 3,030 2,330 1,880 1,500 1,250 1,080 980
MIN 1,580 980 680 480 380 330 280	MIN 1,580 980 680 480 380 330 280	MIN 1,580 980 680 480 380 330 280
● 6.6 m Boom	● 6.6 m Boom	● 6.6 m Boom
LOAD RADIUS (m) 2.2 <sup>RD</sup> 2.5 3.0 3.5 4.0 4.5 5.0 5.5 6.0 6.4	LOAD RADIUS (m) 2.2 <sup>RD</sup> 2.5 3.0 3.5 4.0 4.5 5.0 5.5 6.0 6.4	LOAD RADIUS (m) 2.2 <sup>RD</sup> 2.5 3.0 3.5 4.0 4.5 5.0 5.5 6.0 6.4
CRANE STRENGTH 1,880 1,680 1,430 1,230 1,080 980 900 800 730 680	CRANE STRENGTH 1,880 1,680 1,430 1,230 1,080 980 900 800 730 680	CRANE STRENGTH 1,880 1,680 1,430 1,230 1,080 980 900 800 730 680
EMPTY CHASSIS Extension width of outriggers MAX 1,880 1,680 1,430 1,230 930 730 680	EMPTY CHASSIS Extension width of outriggers MAX 1,880 1,680 1,400 1,100 850 700 600 530 480 430	EMPTY CHASSIS Extension width of outriggers MAX 1,880 1,680 1,430 1,230 1,080 980 900 800 730 680
MIN 1,580 980 680 480 380 330 280	MIN 1,580 980 680 480 380 300 250 230	MIN 1,580 980 680 480 380 300 250 230
TM-ZE294HRB	TM-ZE294HRB	TM-ZE294HRB
● 3.17 m / 5.12 m Boom	● 3.17 m / 5.12 m Boom	● 3.17 m / 5.12 m Boom
LOAD RADIUS (m) 1.6 <sup>RD</sup> below 2.0 2.5 3.0 3.5 4.0 4.5 4.92	LOAD RADIUS (m) 1.6 <sup>RD</sup> below 2.0 2.5 3.0 3.5 4.0 4.5 4.92	LOAD RADIUS (m) 1.6 <sup>RD</sup> below 2.0 2.5 3.0 3.5 4.0 4.5 4.92
CRANE STRENGTH 3,030 2,330 1,880 1,500 1,250 1,080 930 850	CRANE STRENGTH 3,030 2,330 1,880 1,500 1,250 1,080 930 850	CRANE STRENGTH 3,030 2,330 1,880 1,500 1,250 1,080 930 850
EMPTY CHASSIS Extension width of outriggers MAX 3,030 2,330 1,800 1,250 930 730 580 530	EMPTY CHASSIS Extension width of outriggers MAX 3,030 2,330 1,880 1,500 1,100 880 700 600	EMPTY CHASSIS Extension width of outriggers MAX 3,030 2,330 1,880 1,500 1,250 1,080 930 850
MIN 1,580 980 680 480 380 280 250 230	MIN 1,580 980 680 480 380 300 250 230	MIN 1,580 980 680 480 380 300 250 230
● 7.01 m Boom	● 7.01 m Boom	● 7.01 m Boom
LOAD RADIUS (m) 2.2 <sup>RD</sup> 2.5 3.0 3.5 4.0 4.5 5.0 5.5 6.0 6.81	LOAD RADIUS (m) 2.2 <sup>RD</sup> 2.5 3.0 3.5 4.0 4.5 5.0 5.5 6.0 6.81	LOAD RADIUS (m) 2.2 <sup>RD</sup> 2.5 3.0 3.5 4.0 4.5 5.0 5.5 6.0 6.81
CRANE STRENGTH 1,880 1,680 1,430 1,230 1,080 930 830 730 650 580	CRANE STRENGTH 1,880 1,680 1,430 1,230 1,080 930 830 730 650 580	CRANE STRENGTH 1,880 1,680 1,430 1,230 1,080 930 830 730 650 580
EMPTY CHASSIS Extension width of outriggers MAX 1,880 1,680 1,430 1,230 930 730 650 580	EMPTY CHASSIS Extension width of outriggers MAX 1,880 1,680 1,400 1,100 880 700 600 530 450 350	EMPTY CHASSIS Extension width of outriggers MAX 1,880 1,680 1,430 1,230 1,080 930 830 730 650 580
MIN 1,580 980 680 480 380 300 250 230	MIN 1,580 980 680 480 380 300 250 230	MIN 1,580 980 680 480 380 300 250 230
● 8.9 m Boom	● 8.9 m Boom	● 8.9 m Boom
LOAD RADIUS (m) 3.0 <sup>RD</sup> 3.5 4.0 5.0 6.0 7.0 8.0 8.7	LOAD RADIUS (m) 3.0 <sup>RD</sup> 3.5 4.0 5.0 6.0 7.0 8.0 8.7	LOAD RADIUS (m) 3.0 <sup>RD</sup> 3.5 4.0 5.0 6.0 7.0 8.0 8.7
CRANE STRENGTH 1,080 1,080 980 780 650 550 480 430	CRANE STRENGTH 1,080 1,080 980 780 650 550 480 430	CRANE STRENGTH 1,080 1,080 980 780 650 550 480 430
EMPTY CHASSIS Extension width of outriggers MAX 1,080 930 730 500 350 280 230 200	EMPTY CHASSIS Extension width of outriggers MAX 1,080 1,080 880 600 450 350 280 250	EMPTY CHASSIS Extension width of outriggers MAX 1,080 1,080 980 780 650 550 480 430
MIN 1,080 930 730 500 350 280 230 200	MIN 1,080 930 730 500 350 280 250	MIN 1,080 980 780 650 550 480 430
TM-ZE295HRB	TM-ZE295HRB	TM-ZE295HRB
● 3.13 m / 5.07 m Boom	● 3.13 m / 5.07 m Boom	● 3.13 m / 5.07 m Boom
LOAD RADIUS (m) 1.5 <sup>RD</sup> below 2.0 2.5 3.0 3.5 4.0 4.5 4.87	LOAD RADIUS (m) 1.5 <sup>RD</sup> below 2.0 2.5 3.0 3.5 4.0 4.5 4.87	LOAD RADIUS (m) 1.5 <sup>RD</sup> below 2.0 2.5 3.0 3.5 4.0 4.5 4.87
CRANE STRENGTH 3,030 2,180 1,730 1,430 1,230 1,080 930 830	CRANE STRENGTH 3,030 2,180 1,730 1,430 1,230 1,080 930 830	CRANE STRENGTH 3,030 2,180 1,730 1,430 1,230 1,080 930 830
EMPTY CHASSIS Extension width of outriggers MAX 3,030 2,180 1,730 1,430 1,130 850 680 580	EMPTY CHASSIS Extension width of outriggers MAX 3,030 2,180 1,730 1,430 1,130 850 680 580	EMPTY CHASSIS Extension width of outriggers MAX 3,030 2,180 1,730 1,430 1,230 1,080 930 830
MIN 1,580 980 630 480 380 280 230 200	MIN 1,580 980 630 480 380 280 230 200	MIN 1,580 980 630 480 380 280 230 200
● 7.0 m Boom	● 7.0 m Boom	● 7.0 m Boom
LOAD RADIUS (m) 2.2 <sup>RD</sup> 2.5 3.0 3.5 4.0 4.5 5.0 5.5 6.0 6.8	LOAD RADIUS (m) 2.2 <sup>RD</sup> 2.5 3.0 3.5 4.0 4.5 5.0 5.5 6.0 6.8	LOAD RADIUS (m) 2.2 <sup>RD</sup> 2.5 3.0 3.5 4.0 4.5 5.0 5.5 6.0 6.8
CRANE STRENGTH 1,880 1,680 1,430 1,180 1,030 880 780 680 630 530	CRANE STRENGTH 1,880 1,680 1,430 1,180 1,030 880 780 680 630 530	CRANE STRENGTH 1,880 1,680 1,430 1,180 1,030 880 780 680 630 530
EMPTY CHASSIS Extension width of outriggers MAX 1,880 1,680 1,430 1,130 850 680 550 450 400 300	EMPTY CHASSIS Extension width of outriggers MAX 1,880 1,680 1,400 1,100 880 700 600 530 450 350	EMPTY CHASSIS Extension width of outriggers MAX 1,880 1,680 1,430 1,180 1,030 880 780 680 630 530
MIN 1,580 980 630 480 380 280 230 200	MIN 1,580 980 630 480 380 280 230 200	MIN 1,580 980 630 480 380 280 230 200
● 8.9 m Boom	● 8.9 m Boom	● 8.9 m Boom
LOAD RADIUS (m) 3.0 <sup>RD</sup> 3.5 4.0 5.0 6.0 7.0 8.0 8.7	LOAD RADIUS (m) 3.0 <sup>RD</sup> 3.5 4.0 5.0 6.0 7.0 8.0 8.7	LOAD RADIUS (m) 3.0 <sup>RD</sup> 3.5 4.0 5.0 6.0 7.0 8.0 8.7
CRANE STRENGTH 1,030 950 830 680 580 500 430 400	CRANE STRENGTH 1,030 950 830 680 580 500 430 400	CRANE STRENGTH 1,030 950 830 680 580 500 430 400
EMPTY CHASSIS Extension width of outriggers MAX 1,030 900 780 550 400 300 230 200	EMPTY CHASSIS Extension width of outriggers MAX 1,030 900 780 550 400 300 230 200	EMPTY CHASSIS Extension width of outriggers MAX 1,030 950 830 680 580 500 430 400
MIN 1,030 900 780 550 400 300 230 200	MIN 1,030 900 780 550 400 300 230 200	MIN 1,030 950 830 680 580 500 430 400
● 10.8 m Boom	● 10.8 m Boom	● 10.8 m Boom
LOAD RADIUS (m) 4.0 <sup>RD</sup> 4.5 5.0 6.0 7.0 8.0 9.0 10.0 10.6	LOAD RADIUS (m) 4.0 <sup>RD</sup> 4.5 5.0 6.0 7.0 8.0 9.0 10.0 10.6	LOAD RADIUS (m) 4.0 <sup>RD</sup> 4.5 5.0 6.0 7.0 8.0 9.0 10.0 10.6
CRANE STRENGTH 680 630 580 480 400 350 300 250 230	CRANE STRENGTH 680 630 580 480 400 350 300 250 230	CRANE STRENGTH 680 630 580 480 400 350 300 250 230
EMPTY CHASSIS Extension width of outriggers MAX 680 600 530 400 300 230 200 180 150	EMPTY CHASSIS Extension width of outriggers MAX 680 600 530 400 300 230 200 180 150	EMPTY CHASSIS Extension width of outriggers MAX 680 630 580 480 400 350 300 250 230
MIN 680 600 530 400 300 230 200 180 150	MIN 680 600 530 400 300 230 200 180 150	MIN 680 630 580 480 400 350 300 250 230
TM-ZE296HRB	TM-ZE296HRB	TM-ZE296HRB
● 3.23 m / 5.17 m Boom	● 3.23 m / 5.17 m Boom	● 3.23 m / 5.17 m Boom
LOAD RADIUS (m) 1.5 <sup>RD</sup> below 2.0 2.5 3.0 3.5 4.0 4.5 4.97	LOAD RADIUS (m) 1.5 <sup>RD</sup> below 2.0 2.5 3.0 3.5 4.0 4.5 4.97	LOAD RADIUS (m) 1.5 <sup>RD</sup> below 2.0 2.5 3.0 3.5 4.0 4.5 4.97
CRANE STRENGTH 3,030 2,180 1,730 1,430 1,230 1,050 900 800	CRANE STRENGTH 3,030 2,180 1,730 1,430 1,230 1,050 900 800	CRANE STRENGTH 3,030 2,180 1,730 1,430 1,230 1,050 900 800
EMPTY CHASSIS Extension width of outriggers MAX 3,030 2,180 1,730 1,430 1,230 1,030 830 680	EMPTY CHASSIS Extension width of outriggers MAX 3,030 2,180 1,730 1,430 1,230 1,030 830 680	EMPTY CHASSIS Extension width of outriggers MAX 3,030 2,180 1,730 1,430 1,230 1,050 900 800
MIN 1,580 1,130 730 530 380 280 230 180	MIN 1,580 1,130 730 530 380 280 230 180	MIN 1,580 1,130 730 530 380 280 230 180
● 7.1 m Boom	● 7.1 m Boom	● 7.1 m Boom
LOAD RADIUS (m) 2.2 <sup>RD</sup> 2.5 3.0 3.5 4.0 4.5 5.0 5.5 6.0 6.9	LOAD RADIUS (m) 2.2 <sup>RD</sup> 2.5 3.0 3.5 4.0 4.5 5.0 5.5 6.0 6.9	LOAD RADIUS (m) 2.2 <sup>RD</sup> 2.5 3.0 3.5 4.0 4.5 5.0 5.5 6.0 6.9
CRANE STRENGTH 1,880 1,680 1,430 1,180 1,030 880 780 680 600 500	CRANE STRENGTH 1,880 1,680 1,430 1,180 1,030 880 780 680 600 500	CRANE STRENGTH 1,880 1,680 1,430 1,180 1,030 880 780 680 600 500
EMPTY CHASSIS Extension width of outriggers MAX 1,880 1,680 1,430 1,130 930 780 680 580 480 380	EMPTY CHASSIS Extension width of outriggers MAX 1,880 1,680 1,430 1,180 1,030 880 780 680 600 500	EMPTY CHASSIS Extension width of outriggers MAX 1,880 1,680 1,430 1,180 1,030 880 780 680 600 500
MIN 1,880 1,680 1,430 1,130 930 780 680 580 480 380	MIN 1,880 1,680 1,430 1,180 1,030 880 780 680 600 500	MIN 1,880 1,680 1,430 1,180 1,030 880 780 680 600 500
● 9.0 m Boom	● 9.0 m Boom	● 9.0 m Boom
LOAD RADIUS (m) 3.0 <sup>RD</sup> 3.5 4.0 5.0 6.0 7.0 8.0 8.8	LOAD RADIUS (m) 3.0 <sup>RD</sup> 3.5 4.0 5.0 6.0 7.0 8.0 8.8	LOAD RADIUS (m) 3.0 <sup>RD</sup> 3.5 4.0 5.0 6.0 7.0 8.0 8.8
CRANE STRENGTH 900 900 830 680 580 500 430 350	CRANE STRENGTH 900 900 830 680 580 500 430 350	CRANE STRENGTH 900 900 830 680 580 500 430 350
EMPTY CHASSIS Extension width of outriggers MAX 900 900 800 600 480 380 280 230	EMPTY CHASSIS Extension width of outriggers MAX 900 900 830 680 580 500 430 350	EMPTY CHASSIS Extension width of outriggers MAX 900 900 830 680 580 500 430 350
MIN 900 900 800 600 480 380 280 230	MIN 900 900 830 680 580 500 430 350	MIN 900 900 830 680 580 500 430 350
● 10.9 m Boom	● 10.9 m Boom	● 10.9 m Boom
LOAD RADIUS (m) 4.0 <sup>RD</sup> 4.5 5.0 6.0 7.0 8.0 9.0 10.0 10.7	LOAD RADIUS (m) 4.0 <sup>RD</sup> 4.5 5.0 6.0 7.0 8.0 9.0 10.0 10.7	LOAD RADIUS (m) 4.0 <sup>RD</sup> 4.5 5.0 6.0 7.0 8.0 9.0 10.0 10.7
CRANE STRENGTH 680 630 580 480 400 350 300 250 230	CRANE STRENGTH 680 630 580 480 400 350 300 250 230	CRANE STRENGTH 680 630 580 480 400 350 300 250 230
EMPTY CHASSIS Extension width of outriggers MAX 530 450 400 330 280 250 200 180 150	EMPTY CHASSIS Extension width of outriggers MAX 680 630 580 480 400 350 300 250 230	EMPTY CHASSIS Extension width of outriggers MAX 680 630 580 480 400 350 300 250 230
MIN 530 450 400 330 280 250 200 180 150	MIN 680 630 580 480 400 350 300 250 230	MIN 680 630 580 480 400 350 300 250 230
● 12.8 m Boom	● 12.8 m Boom	● 12.8 m Boom
LOAD RADIUS (m) 5.3 <sup>RD</sup> 6.0 7.0 8.0 9.0 10.0 11.0 12.6	LOAD RADIUS (m) 5.3 <sup>RD</sup> 6.0 7.0 8.0 9.0 10.0 11.0 12.6	LOAD RADIUS (m) 5.3 <sup>RD</sup> 6.0 7.0 8.0 9.0 10.0 11.0 12.6
CRANE STRENGTH 280 250 220 200 180 160 140 120	CRANE STRENGTH 280 250 220 200 180 160 140 120	CRANE STRENGTH 280 250 220 200 180 160 140 120
EMPTY CHASSIS Extension width of outriggers MAX 280 250 220 190 160 140 130 120	EMPTY CHASSIS Extension width of outriggers MAX 280 250 220 200 180 160 140 120	EMPTY CHASSIS Extension width of outriggers MAX 280 250 220 200 180 160 140 120
MIN 280 250 220 190 160 140 130 120	MIN 280 250 220 200 180 160 140 120	MIN 280 250 220 200 180 160 140 120

Notes:

- Rated capacity indicator issues warning with the limit warning lamp and the buzzer when the working state approaches the empty chassis rated lifting capacity. If the limit alarm is issued, stop operation immediately.
- When the AML is equipped with the rated capacity limiter, an operation stops automatically if the empty chassis rated lifting capacity is exceeded.
- Empty Chassis Rated Capacities in these tables depend on condition that crane is set level on firm level ground.
- This value includes the mass of lifting devices such as hook block (30kg).
- When the outriggers are extended to the middle width, read the capacities rated for the minimum extension width.
- This load radius shows actual load radius which includes boom deflection.
- If the boom length exceeds the table value even a little, the performance is limited to the performance of the next boom length.
- Empty chassis rated lifting capacity varies according to the working area.
  - Front mounting <over-side, over-rear area> : 100%
  - <over-front area> : < 25% (\*1) or 60% (\*1) or 100% (\*1)
  - Rear mounting <over-front, over-rear area> : 100%
  - <over-side area> : 30%
- \*1 : Depend on the types of chassis.
- Empty Chassis Rated Capacities table A,C and D (\*2) depend on the types of chassis. (The following table shows guidelines for bodywork vehicles that can achieve the rated lifting capacity tables A and C for vehicles. The rated lifting capacity may not be applicable depending on vehicle specifications. Be sure to carry out a stability inspection to determine which rated lifting capacity tables to apply.)

\*2: TM-ZE295HRB & TM-ZE296HRB for C and D only

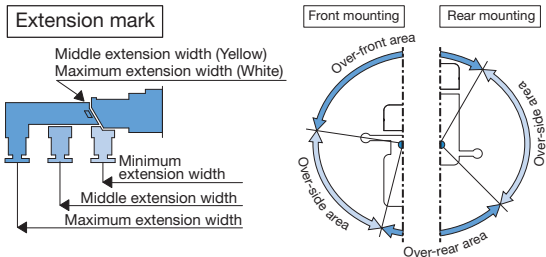
TM-ZE293HRB & TM-ZE294HRB

A	4.5 t ≤ GVW < 8.0 t, 2,750 mm ≤ WB (*3)
C	4.5 t ≤ GVW < 8.0 t, 3,395 mm ≤ WB (*3), 1,995 mm ≤ Vehicle width

TM-ZE295HRB & TM-ZE296HRB

C	4.5 t ≤ GVW < 8.0 t, 3,395 mm ≤ WB (*3), 1,995 mm ≤ Vehicle width (TM-ZE296HRB must be set up the rear outrigger.)
---	--

\*3: From the front axle to the farthest rear axle.



\*Actual specifications may differ. 8

info@tadano.com  
www.tadano.com



Tadano Ltd.

KANDA SQUARE 18th Floor, 2-2-1 Kanda-Nishikicho,  
Chiyoda-ku, Tokyo 101-0054, Japan  
Phone: +81-3-6811-7309



TRUCK LOADER CRANE

# TM-ZE290 Series

TM-ZE293HRB

TM-ZE294HRB

TM-ZE295HRB

TM-ZE296HRB





# Tadano **QUALITY:** advanced safety and power in a single package

The TM-ZE290HRB is a more powerful crane that comes with the sophisticated, high-quality Eyes system as standard equipment. It delivers greater safety and peace of mind.

## TM-ZE290HRB



### Radio Controller with Color LCD\* Display

\*Liquid Crystal Display

A radio controller for remotely operating the crane is provided as standard. In addition to displaying the actual load, rated load, and moment load ratio, it also features a large-screen and power-saving color LCD display, has a feature that can customize speed adjustment for various operations, and has an emergency stop function. The "load weight" function makes it possible to check the work progress and the load weight on the vehicle, and also prevents overloading. These features contribute not only to the safety of crane work, but also to the safety of the vehicle when it is traveling.

\*\*The IP rating indicates waterproofness and dust protection as defined in IEC 60529. An IP66K rating indicates an exceptional level of waterproofness and dust protection ensuring peace of mind.



**WATER-  
PROOFNESS**  
[IP66K\*\*]



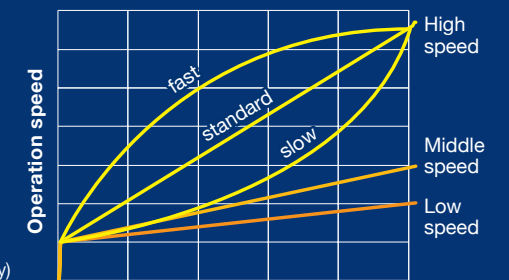
Emergency stop



### Feeling Operation

The operation speed of the machine when the trigger is pulled can be increased or decreased from the standard speed.

(High speed mode only)



Pulling conditions of the trigger

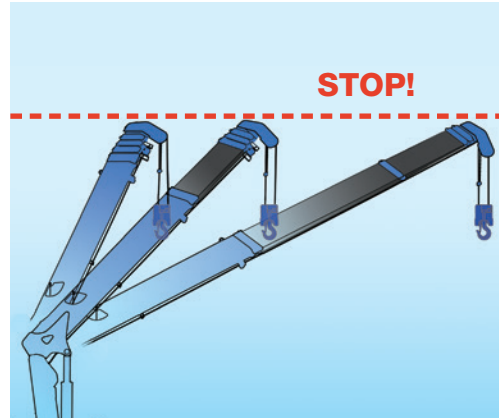


\*Actual specifications may differ.



## Working Height Limit Function

This function presets the upper limit of the boom height (stop position). This is highly effective in work sites where attention is required to the boom height, such as under power lines and indoors.



## Jack Interlock

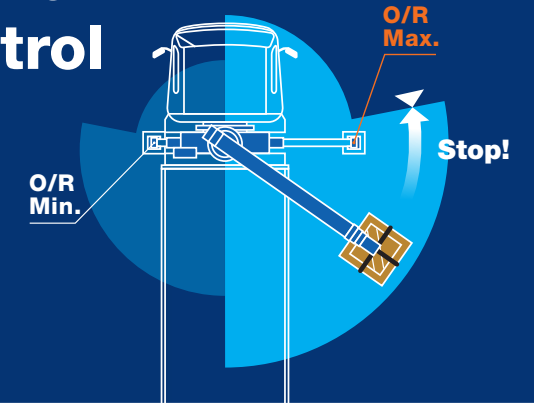
Disables crane operation when the left or right jack is not in contact with the ground.



## Outriggers Asymmetric Extension Width Control

### Optimum Lifting Performance at Any Outrigger Width

Constantly monitors the slewing angle and difference in outrigger extension widths. Crane motion is controlled according to the extension width of each outrigger.



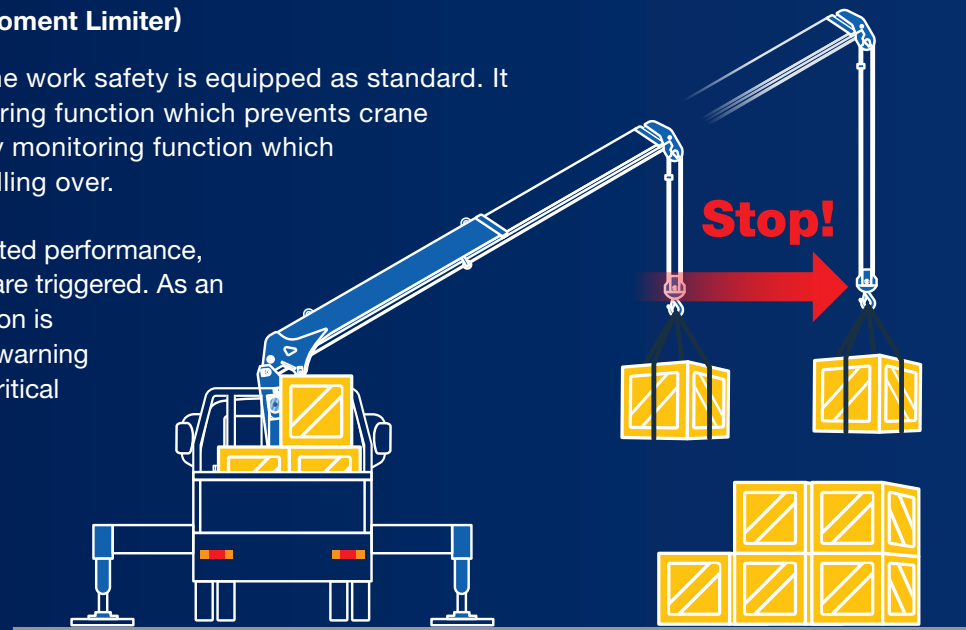
# TM-ZE290HRB

## Cargo Crane for Small Size Vehicles

## AML (Automatic Moment Limiter)

An AML that monitors crane work safety is equipped as standard. It includes a strength monitoring function which prevents crane overloading, and a stability monitoring function which prevents the crane from falling over.

As the crane approaches rated performance, warning alarms and lamps are triggered. As an extra level of safety, operation is automatically stopped and warning alarms are triggered once critical parameters are reached.



## Centralized Control Panel Equipped with Safety Lamp

The lifting chart and switches for crane operation are grouped on both sides of the control panel, and warning lights are installed at the top of the panel.

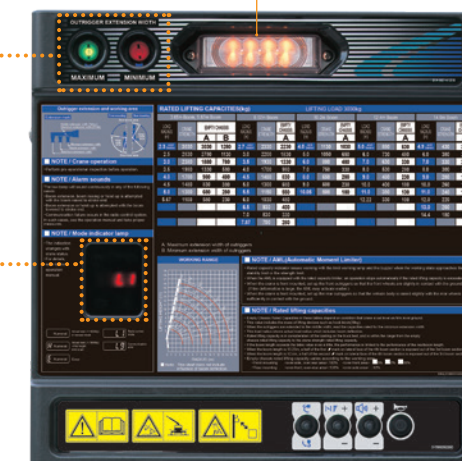
### Limit warning lamp

#### Outrigger extension state

Indicator lamp displays the outrigger extension width.

#### Mode indicator

Displays the actual load, height limit value, error code, etc.



## Limit Warning Lamps

The warning lights on the control panel, moment indicator in the radio controller, three-color limit warning lamp on the crane post, and warning alarm function interlinked with one another.



## Hook-in/out System

Tadano's hook-in system is equipped as standard and enhances work efficiency. During hook-out, the boom raises automatically to avoid hitting cargo.

## Anti-two-block Function

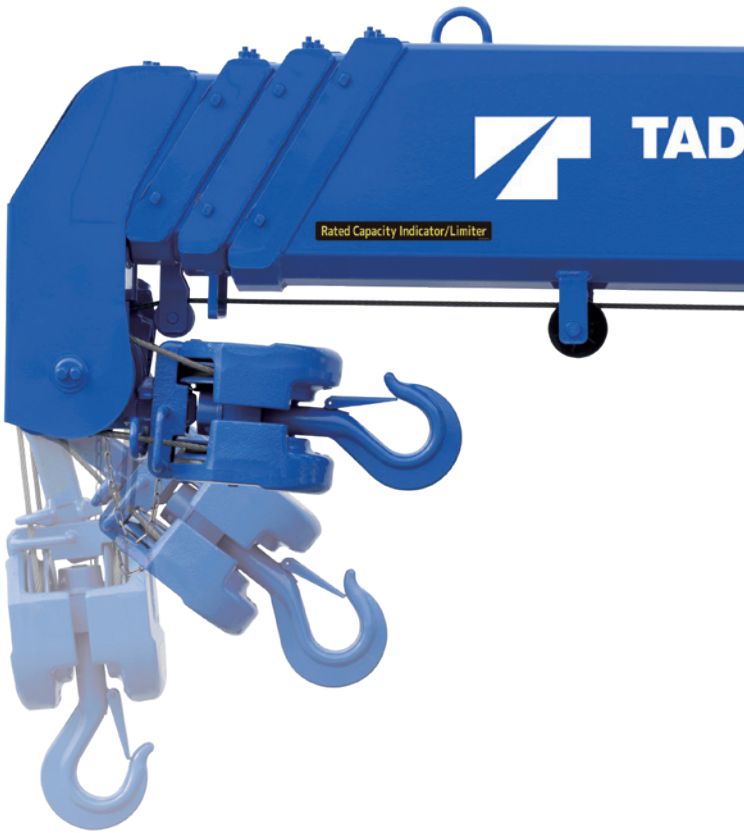
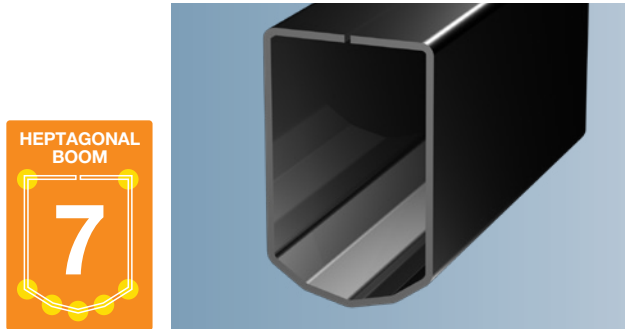
This function stops crane operation (hoisting up, boom elevation, and boom extension) when the hook block touches the weight, and warns the operator with an alarm, to prevent the hook block from hitting the boom head.

# TM-ZE290HRB

## Cargo Crane for Small Size Vehicles

## Powerful Heptagonal Boom

Tadano's unique heptagonal boom is made of high-tensile steel. The boom structure consists of a single piece of steel plate for lower boom weight and more powerful lifting capacity. Special valves enable smooth boom extension and retraction for smoother operation to reduce shock when telescoping the boom. The cables and sheaves are all internal - for a clean, clutter-free appearance.



## Emergency Stop

Use this switch to stop machine movement if the machine cannot be controlled during crane operation, or in an emergency. (Outrigger operation does not stop.)



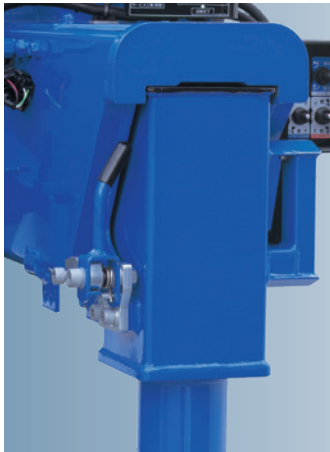
On radio controller

## Automatic Slewing Lock System

This system prevents accidental boom slewing when no slewing operation takes place.

## Outrigger Mechanism for Quicker Work

The outrigger sliders can be operated easy with grip to lock or release and extend or retract them. A lock system also prevents the outriggers from extending during driving.



Lock System

## Spirit Level

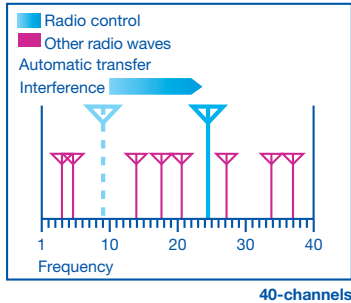
Used to check that the machine is set level in lateral direction when the outriggers are set up.



Spirit Level

## High-powered Radio Controller

Radio Controller with powerful transmitting output automatically selects a frequency free of interference out of as many as 40 channels to avoid trouble caused by interference.

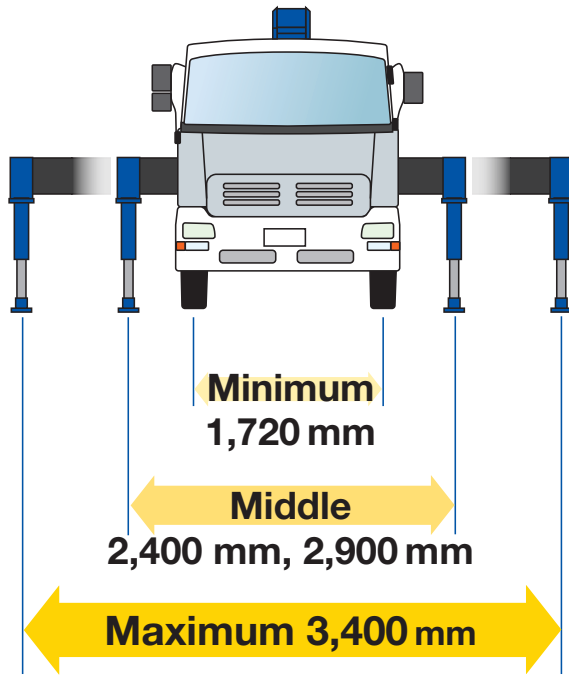


## Cable Follower

The cable follower prevents disorderly cable (wire rope) winding by always pressing the cable onto the winch drum, and keeps the wire rope in the right position.

## Broader Outrigger Width

The employment of parabox-type outriggers enables the outriggers to secure a four-stage extension width up to a maximum of 3.4 meters, substantially enhancing crane performance.



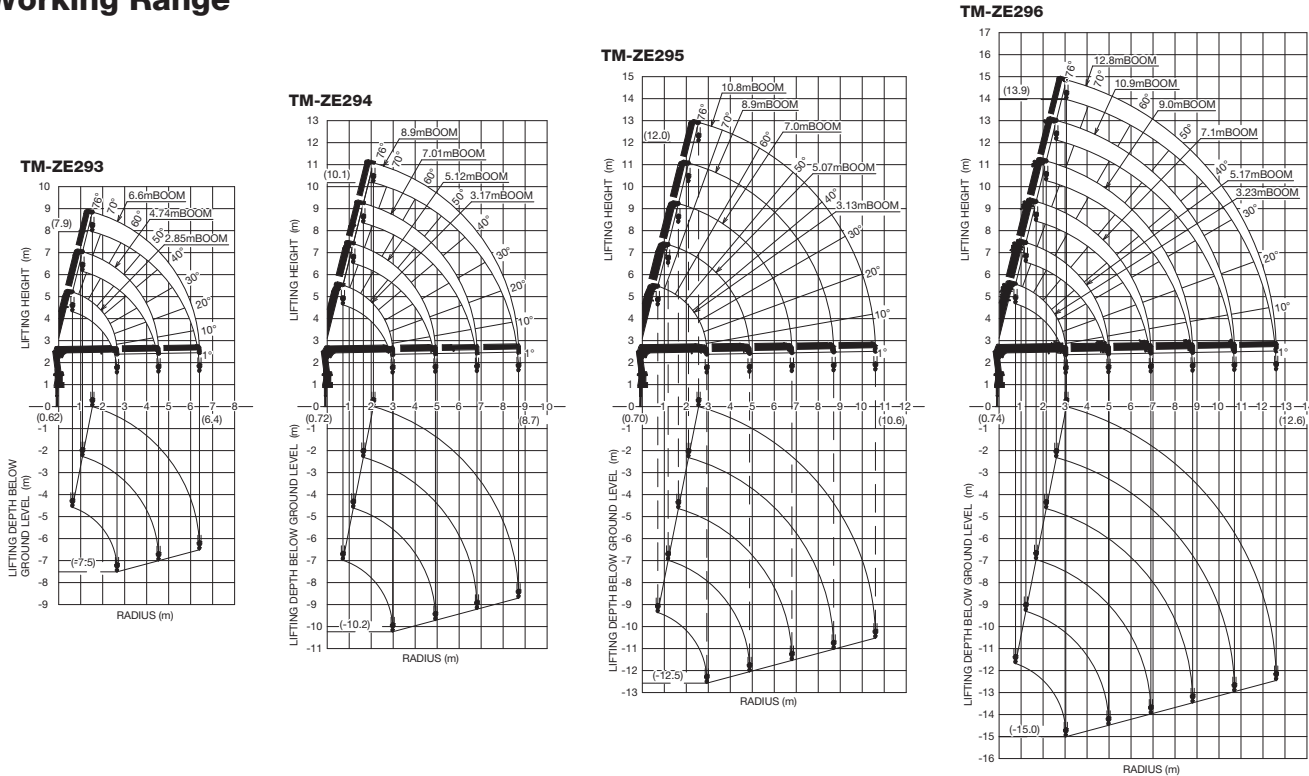
## TM-ZE290HRB series

### Technical Specifications

Model	TM-ZE293HRB	TM-ZE294HRB	TM-ZE295HRB	TM-ZE296HRB
CRANE CAPACITY	3,030 kg at 1.6 m (4-part lines)	3,030 kg at 1.6 m (4-part lines)	3,030 kg at 1.5 m (4-part lines)	3,030 kg at 1.5 m (4-part lines)
BOOM	Three-sectioned, fully hydraulic telescoping boom of heptagonal box construction	Four-sectioned, fully powered partly synchronized telescoping boom of heptagonal box construction	Five-sectioned, fully powered partly synchronized telescoping boom of heptagonal box construction	Six-sectioned, fully powered partly synchronized telescoping boom of heptagonal box construction
Retracted length	2.85 m	3.17 m	3.13 m	3.23 m
Extended length	6.6 m	8.9 m	10.8 m	12.8 m
Extending speed	3.75 m in 10.5 s	5.73 m in 13 s	7.67 m in 15.5 s	9.57 m in 17 s
Elevation	Elevated by a double-acting hydraulic cylinder			
Raising speed	1° to 76° in 6 s			
Boom point	2 sheaves			
WINCH	Hydraulic motor driven spur gear speed reduction, provided with mechanical brake and cable follower.			
Single line pull	7.45 kN (760 kgf)			
Single line speed	68 m/min (at 4th layer)			
Wire rope (Diameter x length)	8 mm x 45 m	8 mm x 56 m	8 mm x 66 m	8 mm x 75 m
Wire rope (Breaking strength)	43.1 kN (4.39 tf)			
Wire rope (Construction)	7 x 7 + 6 x WS (26)			
Hook block	2 sheaves			
HOOK BLOCK STOWING DEVICE	Hook-in (Mechanically stowed beneath boom top portion)			
SLEWING	•Hydraulic motor driven worm gear speed reduction •Continuous 360° full circle slewing on ball bearing slewing ring •Automatic slewing lock			
Slewing speed	2.5 min <sup>-1</sup> (rpm)			
OUTRIGGERS	Manually operated beams and hydraulically operated jacks integral with crane frame.			
Extension width	Min. 1,720 mm center to center(1,870 mm outer to outer), Mid. 2,400 mm center to center(2,550 mm outer to outer), Mid. 2,900 mm center to center(3,050 mm outer to outer), Max. 3,400 mm center to center(3,550 mm outer to outer)			
HYDRAULIC SYSTEM				
Hydraulic pump	Single gear pump			
Hydraulic motors	Axial piston type for winch. Axial piston type for slewing.			
Control valves	Multiple control valves with integral safety valve			
Oil tank capacity	Approx. 28.7 L			
RADIO CONTROLLER	Model : RCS-F (with colored display), Control functions of telescoping, hoisting up and down, elevating, slewing, acceleration, Hook-in, Hook-out, horn, stop operation, outrigger operation and working height limit.			
Frequency	40 frequencies in 433 MHz band			
Operating power supply				
Transmitter	6V DC, Dry battery R6P (SUM-3) x 4			
Control unit	24V DC, Vehicle battery			
Transmitter mass	Approx. 670 g (includes batteries)			
SAFETY DEVICES	•Anti-two-block-device •AML (Automatic Moment Limiter) <Load indication, Load moment ratio indication, Warning alarm, Rated capacity indicator/limiter, Limit warning lamp, Outrigger length detector, Outrigger asymmetric extension width control> •WHL (Working Height Limiter) •Boom angle indicator •Load indicator •Load meter •Over-unwinding prevention •Hook safety latch •Spirit level •Jack interlock •Stop switch on radio controller •Hydraulic safety valves, check valves and holding valves •Limit warning lamp (three-color) •Emergency stop switch •Boom outrigger stowed warning •Rear outrigger extension width detection			
OPTIONAL EQUIPMENT	•Emergency hydraulic pump •Outrigger pads •Rear outriggers (outrigger beam extension type)			
CRANE MASS	Approx. 880 kg (Except crane options and mounting parts.)	Approx. 990 kg (Except crane options and mounting parts.)	Approx. 1,080 kg (Except crane options and mounting parts.)	Approx. 1,150 kg (Except crane options and mounting parts.)

Note: Each operating speeds show the value when there is no load conditions and the pump delivery is the following conditions.  
•32 L/min (Slewing speed)  
•53 L/min (•BOOM: Extending speed, Raising speed •WINCH: Single line speed)

### Working Range



Note: The above lifting heights and boom angles are based on a straight (unladen) boom, and allowance should be made for boom deflection obtained under laden conditions.